

New Generation Tiles
300x300mm Ceramic Floor

superior choice for beautiful floors



MANUFACTURER

ANGEL CERAMICS PVT.LTD.

Old Ghuntu Road, P.O.Box No.: 105, Morbi-363 642 (Guj.) INDIA

Ph.: +91-2822-243801, 243082 Office: +91-93777 43802

E-mail : angelceramics802@gmail.com / info@angelceramics.com

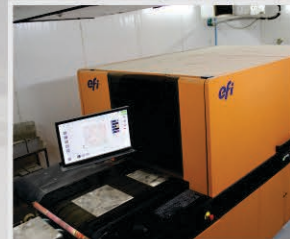
Web : www.angelceramics.com

We are Available at...



angel[®]
FLOOR TILES

The Plant



Company Profile

We Welcome you all to the world of Angel Ceramics, where the ingenuity of Sharp Vision and Strong Network is the backbone. Our Strength lies in the vision to produce quality tiles with in-depth technical input and constant vigilance on the market trends and demands. The with the consistent quality checks has resulted in a healthy track record of our company. The production line of the company is in tune with the best in the world market and the product falls in the line with the best in the E.N. - 1778 11A and Indian Standards IS 13755. Organized R&D of the company has produced and maintained strong quality and design landmarks and we can proudly say our company deserves ISO 9001:2015 standards. A well established dealers network throughout the country and the global presence into markets of U.A.E., South Korea, Taiwan, Africa, Sri Lanka, etc. Is Continually growing.



INDEX

KOREAN SERIES.....01

AMERICAN SERIES.....05

TAIWAN SERIES.....11

INDIAN RUSTIC.....15

AFRICAN SERIES.....19



AN ISO 9001:2015 COMPANY

We are Available at...



U.S.A.



South Africa



U.A.E.



Tanzania



Saudi Arabia



Sri Lanka



Taiwan



South Korea



Australia



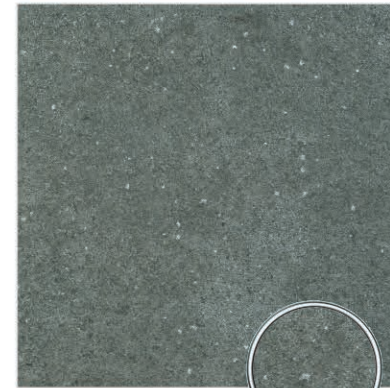
Libiya



Nepal



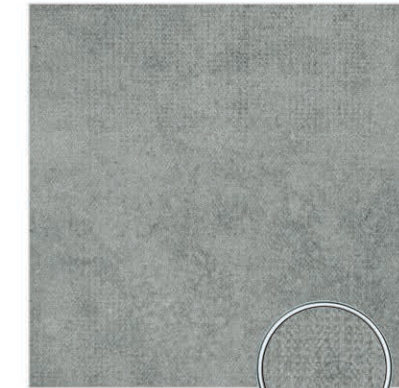
KOREAN SERIES
300x300mm (12"x12")



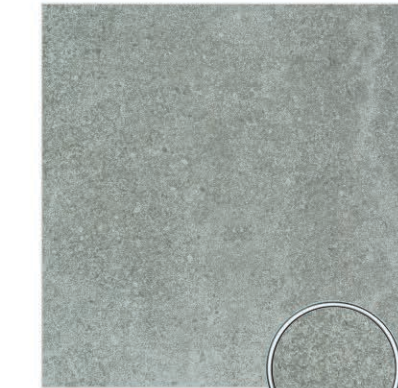
Lime Stone ADG
(Random Multi face)



Lime Stone AWH
(Random 2 P)



AIK-02
(Random 8 P)



AIK-03
(Random 6 P)



AIK-05
(Random 7 P)



AIK-09
(Random 8 P)



AIK-11
(Random 7 P)



AIK-12
(Random 9 P)

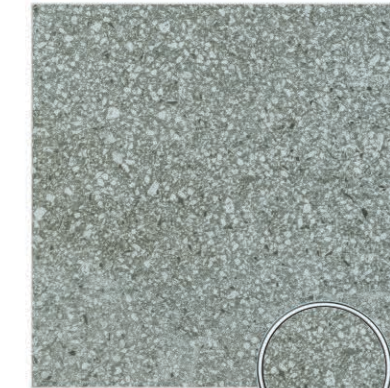




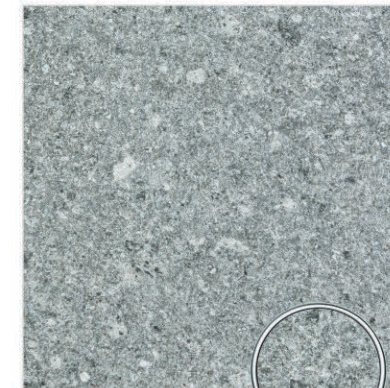
ATGN-1084-OA
(Random 4 P)



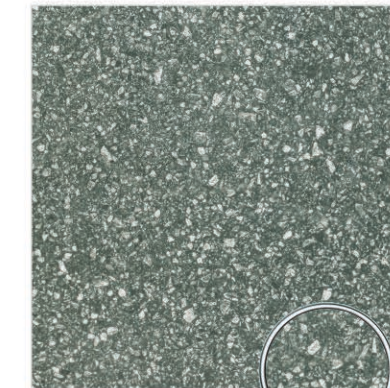
ATGN-1094-OA
(Random 5 P)



ATGN-8084-OA
(Random 4 P)



ATGN-8094-OA
(Random 3 P)



ATGN-9084-OA
(Random 4 P)



To be laid with
using grouting adhesive.



AMERICAN SERIES
300x300mm (12"x12")



AM-01/1DW



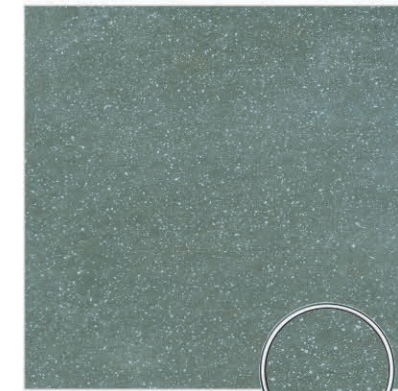
AM-02/1DW
(Random 7 P)



AM-03/1DW
(Random 7 P)



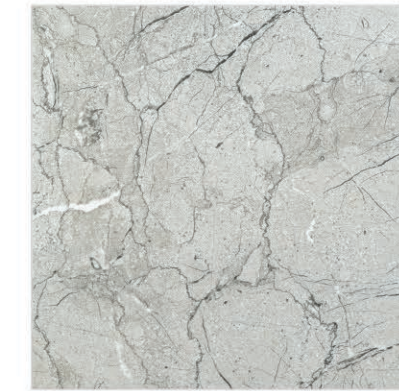
AM-04/1DW
(Random 7 P)



AM-05/1DW



AM-06/1DW
(Random 4 P)



AM-07/1DW

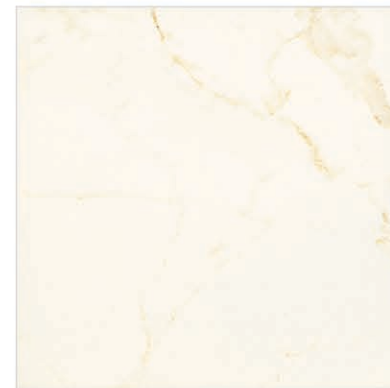


AM-08/1DW

 To be laid with
using grouting adhesive.



AMERICAN SERIES
300x300mm (12"x12")



AM-25/P
(Random 5 P)



AM-26/P
(Random 4 P)



AM-27/P
(Random 4 P)



AM-28/P
(Random 7 P)



AM-29/P
(Random 8 P)



AM-30/P
(Random 8 P)

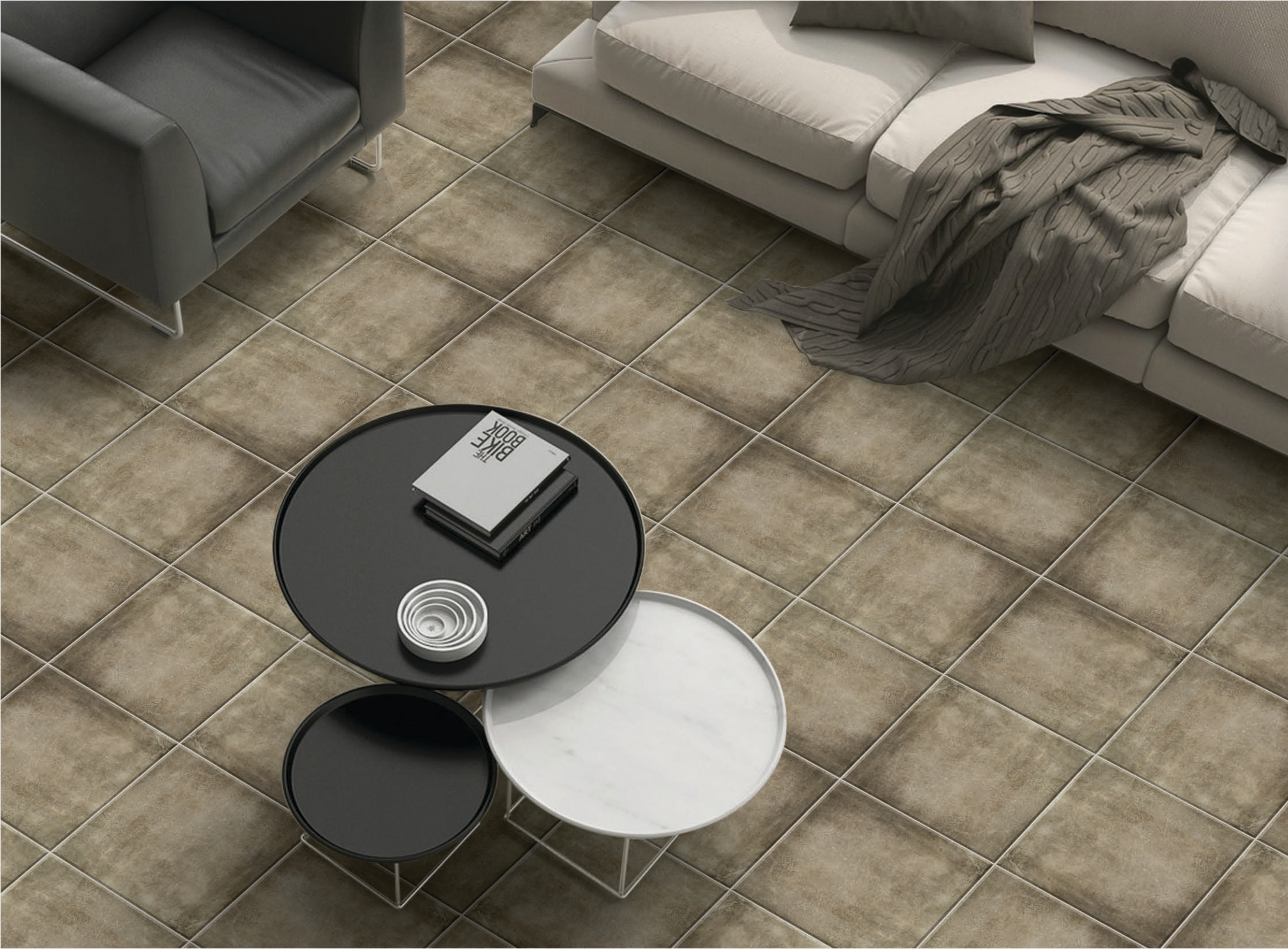


AM-31/P
(Random 8 P)



AM-32/P
(Random Multi face)





AMERICAN SERIES
300x300mm (12"x12")



AM-33/P
(Random 4 P)



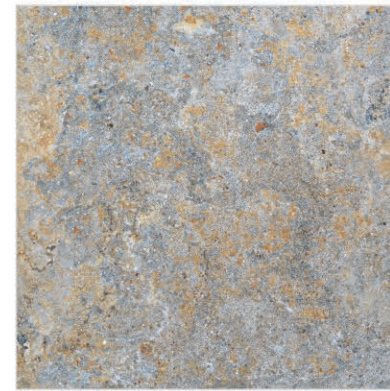
AM-34/P
(Random 8 P)



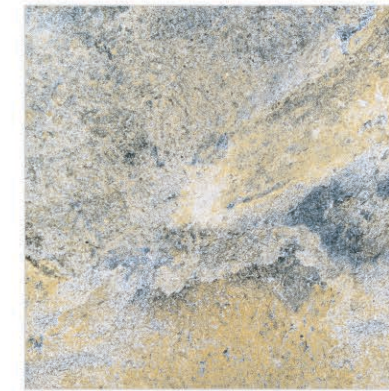
AM-35/P



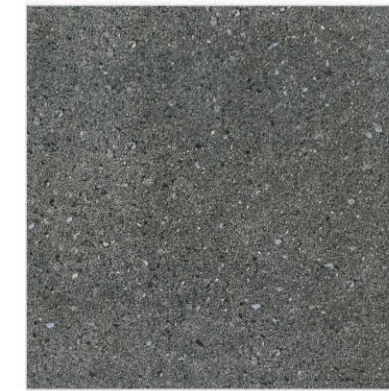
AM-36/P



AM-37/P



AM-38/P



AM-39/P

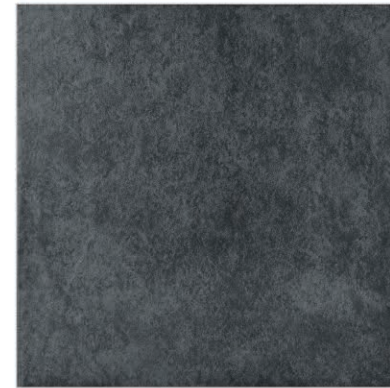


AM-40/P





TAIWAN SERIES
300x300mm (12"x12")



TAI-51
(Random 4 P)



TAI-52
(Random 4 P)



TAI-53
(Random 4 P)



TAI-54
(Random 4 P)



TAI-55
(Random 7 P)



TAI-56



TAI-57
(Random 7 P)



TAI-58
(Random 7 P)

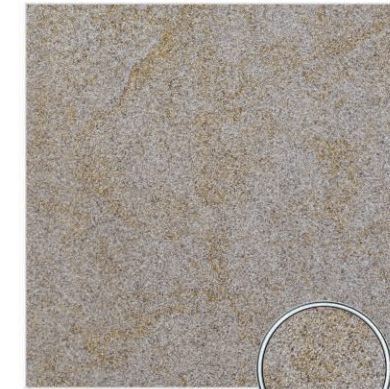




TAIWAN SERIES
300x300mm (12"x12")



TAI-59



TAI-60



TAI-61
(Random 4 P)



TAI-62



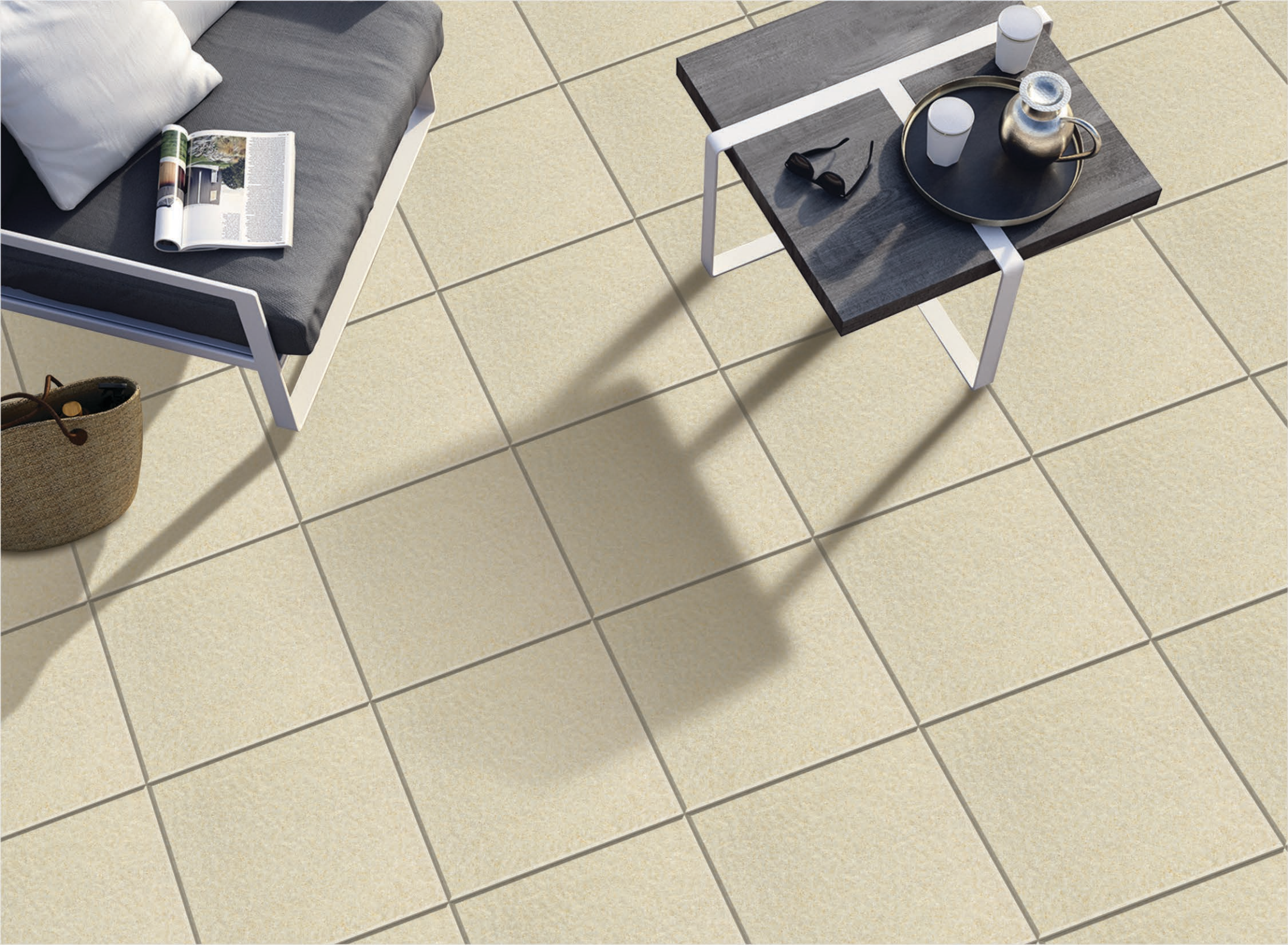
TAI-63



TAI-64



To be laid with
using grouting adhesive.

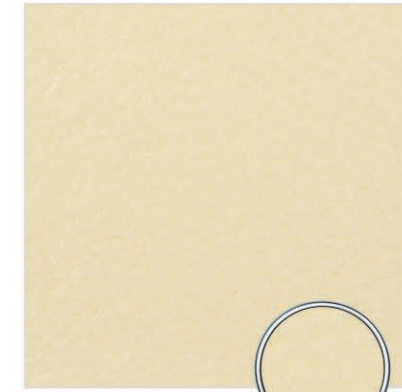


angel[®]
FLOOR TILES

INDIAN RUSTIC
300x300mm (12"x12")



IND-151



IND-152



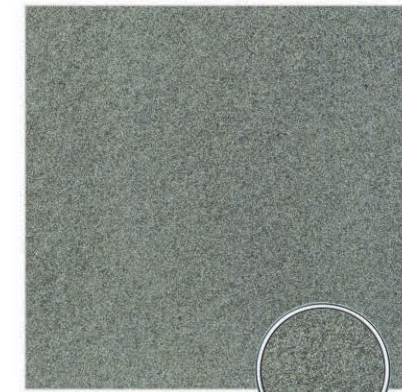
IND-153



IND-154



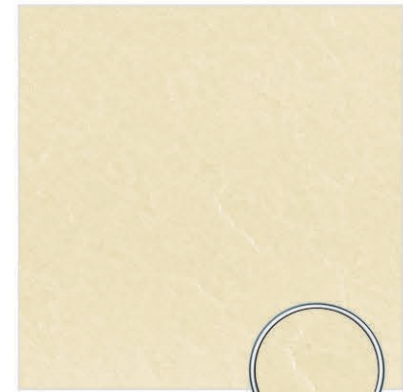
IND-155



IND-156



IND-161



IND-162

 To be laid with
using grouting adhesive.



angel[®]
FLOOR TILES

INDIAN RUSTIC
300x300mm (12"x12")



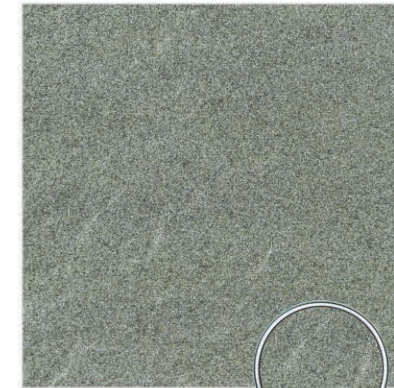
IND-163



IND-164



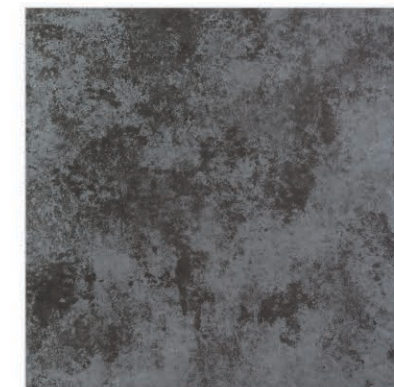
IND-165



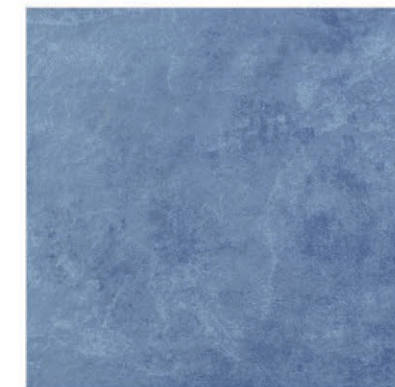
IND-166



IND-167



IND-168



IND-169



IND-170



To be laid with
using grouting adhesive.



angel[®]
FLOOR TILES

AFRICAN SERIES
300x300mm (12"x12")
Satin Matt



AFC-105



AFC-106



AFC-107



AFC-108



angel[®]
FLOOR TILES

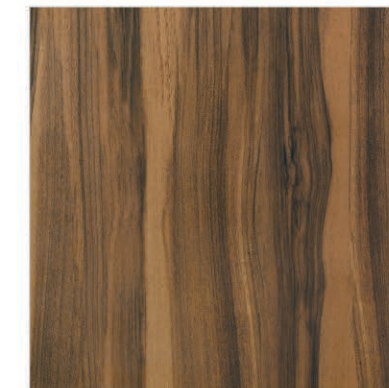
AFRICAN SERIES
300x300mm (12"x12")
Satin Matt



AFC-109



AFC-110



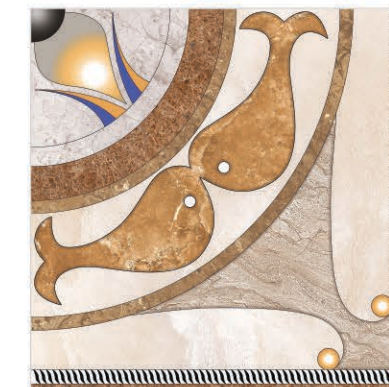
AFC-111



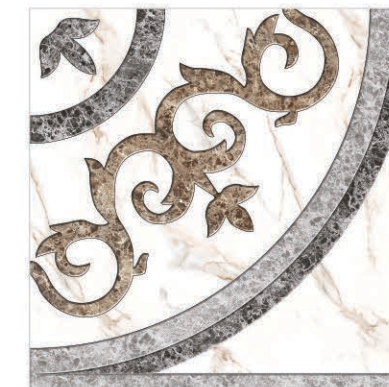
AFC-112



AFC-113



AFC-114



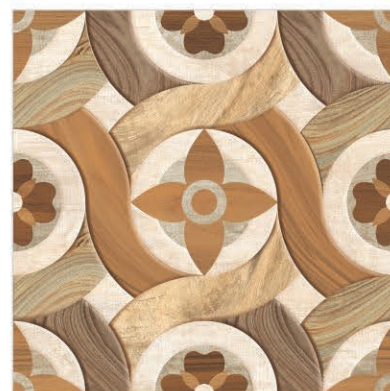
AFC-115



AFC-116



AFRICAN SERIES
300x300mm (12"x12")
Satin Matt



AFC-118



AFC-117

Technical Specification

CHARACTERISTIC	FLOOR		METHOD OF TESTING		
	EUROPEAN STD. EN 1778 11A, IS 13755	ANGEL CERAMIC FLOOR TILES SPECIFICATIONS			
PHYSICAL DIMENSIONS		SIZE : 300mm x 300mm THICKNESS 6.5mm			
1. Deviation in Length	± 0.6%	± 0.5%	EN 98, BS 6431 Part 10. IS 13630 PART 1		
2. Deviation in Thickness	± 5.0%	± 5.0%	- Same as above		
3. Straightness of Sides	± 0.5%	± 0.4%	- Same as above		
4. Rectangularity	± 0.6%	± 0.5%	- Same as above		
5. Surface Flatness (Warpage)	± 0.5%	± 0.5%	- Same as above		
PHYSICAL PROPERTIES					
1. Water Absorption (%) (E)	3%<E<6%	3%<E<6%	EN 99,BS 6431 PART 11. IS 13630 PART 2		
2. Scratch Hardness (Mohs) >=3	Minimum 5	Minimum 6	EN 101,BS 6431 PART 13. IS 13630 PART 13		
3. Resistance to Surface Abrasion	To be specified by the manufacturer	Class III / IV / V Depending on Colour/Shade & Product Typology	EN 154,BS 6431 PART 20. IS 13630 PART 2		
4. Craze Resistance	Minimum 2 cycles	Minimum 2 to 4 cycles	IS 13630 PART 9		
CHEMICAL PROPERTIES					
1. Resistance to Staining	Minimum Class 2	Minimum Class 2	EN 122 (3.1),IS 13630 PART 8		
2. Resistance to Household Chemical	Minimum Class B	Minimum Class B	EN 122 (3.2),IS 13630 PART 8		
THERMAL PROPERTIES					
1. Thermal Shock Resistance	Required	Resistance per STD	EN 104, BS 6431 PART 16. IS 13630 PART 5		
2. Thermal Expansion	Max. 9 x 10 ⁻⁶ .k ⁻¹ for 100°C	Conforms	EN 103, BS 6431 PART 15. IS 13630 PART 4		
PACKING DETAILS					
Sr.No.	Size	Thickness(mm.)	Pieces Per Box	Coverage Area / Box Sq.Mt	Box Per Wight
1	300x300mm (12"x12")	7.4 (Approx)	10	0.90	14.00Kg. (Approx)

Note:

- Colours shown are as accurate as the limitations of the printing process will allow.
- Prospective customers are advised to inspect a sample of the tile before ordering.
- Every effort has been made to ensure the accuracy of the information given.
- However, the company reserves the right to change the specifications without prior notice.
- Sometimes variations in Shade and size being inherent to ceramic industry may occur.
- Before fixing, we advise you to follow the fixing instructions on the cartons of the tiles as no responsibility can be accepted by the company once the tiles have been fixed.
- Minor variation in size, weight and shades may occur in this product as it is an inherent characteristic of ceramic clay.